

# RP

**ROSBOROUGH  
PARTNERS, INC.**

SINCE 1991



*Transforming Landscapes...Transforming Lives*

# CULTIVATE

---

February 12, 2024

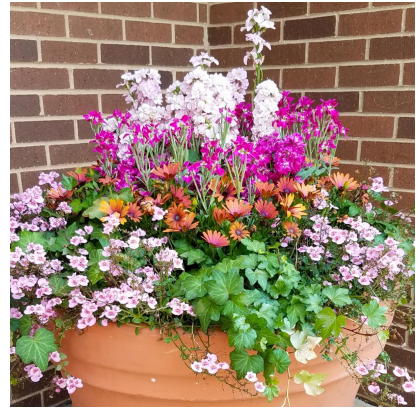
## Renewal Reminder



Spring isn't just a season; it's a state of mind, and we're here to help you bloom with it! There is something deeply satisfying about the vibrant bursts of color that spring floral displays bring, which is why we get so excited to create your cheerful custom pots. It's more than just the beauty of the blooms ... it's an instant sensory explosion that announces, "Spring is here!"

Our team is gearing up for the coming season and placing plant orders as preparation mode kicks into high gear. If you haven't already, **please return your signed maintenance contract renewal and seasonal display contract.** For our clients who are interested in adding seasonal color, there is still time to place

orders for spring, summer and fall blooming annuals, as well as winter décor. We will be ready to hit the ground running as soon as Mother Nature gives the green light.

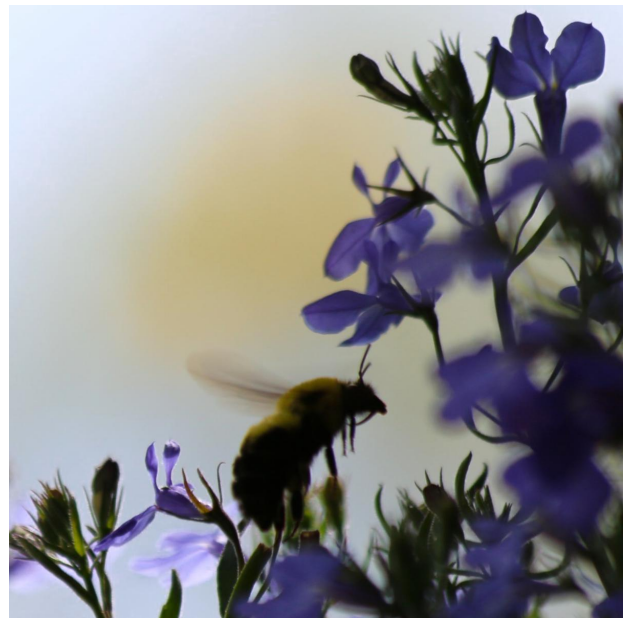


Check out our Pinterest for your landscape inspiration >>>



If you have any questions about your renewal, feel free to contact your Client Steward directly, or call our office: 847-549-1361, Monday-Friday, 8:30a-5:00p.

---



## Garden Steward Team

With regularly scheduled maintenance completed for the season, the Garden Steward team will be focused the following:

- Winter pruning (as weather permits)**
- Snow services (as contracted)**

## Plant Health Care

CLOSED UNTIL SPRING

---

# Contact Information

Feel free to contact your Garden Steward directly with any questions or requests for service. Or contact our office 847/549-1361, Monday-Friday, 8:30am-5:00pm.

## Design Team

Joe Haubert: 847/514-8376 / [joseph@rosboroughpartners.com](mailto:joseph@rosboroughpartners.com)

Chris Durley: 847/774-2006 / [chris@rosboroughpartners.com](mailto:chris@rosboroughpartners.com)

Taylor Lininger: 847/417-0834 / [taylor@rosboroughpartners.com](mailto:taylor@rosboroughpartners.com)

Erika Plascencia: 847/343-7403 / [erika@rosboroughpartners.com](mailto:erika@rosboroughpartners.com)

Matt Johnson: 224/612-3319 / [matt@rosboroughpartners.com](mailto:matt@rosboroughpartners.com)

## Garden Steward Team

Jose Mercado: 847/417-0841 / [jose@rosboroughpartners.com](mailto:jose@rosboroughpartners.com)

Terri Thornton: 847/514-8455 / [terri@rosboroughpartners.com](mailto:terri@rosboroughpartners.com)

Gabe Mercado: 847/417-4350 / [gabe@rosboroughpartners.com](mailto:gabe@rosboroughpartners.com)

Bill Marty: 224/471-7904 / [wmarty@rosboroughpartners.com](mailto:wmarty@rosboroughpartners.com)

## Plant Health Care

Lucio Torres: 847/417-1618 / [lucio@rosboroughpartners.com](mailto:lucio@rosboroughpartners.com)

## Chief Steward Officer

Phil Rosborough: 847/417-0832 / [phil@rosboroughpartners.com](mailto:phil@rosboroughpartners.com)

---

Rosborough Partners Inc | [rosboroughpartners.com](http://rosboroughpartners.com)



---

Rosboroughpartners, Inc. | 342 N. 4th St., Suite 104, Libertyville, IL 60048

[Unsubscribe](mailto:becky@rosboroughpartners.com) [becky@rosboroughpartners.com](mailto:becky@rosboroughpartners.com)

[Update Profile](#) | [Constant Contact Data Notice](#)

Sent by [becky@rosboroughpartners.com](mailto:becky@rosboroughpartners.com) powered by



Try email marketing for free today!