

RP

ROSBOROUGH
PARTNERS, INC.

SINCE 1991



Transforming Landscapes...Transforming Lives

CULTIVATE

January 29, 2024

Snow & Ice On Gardens



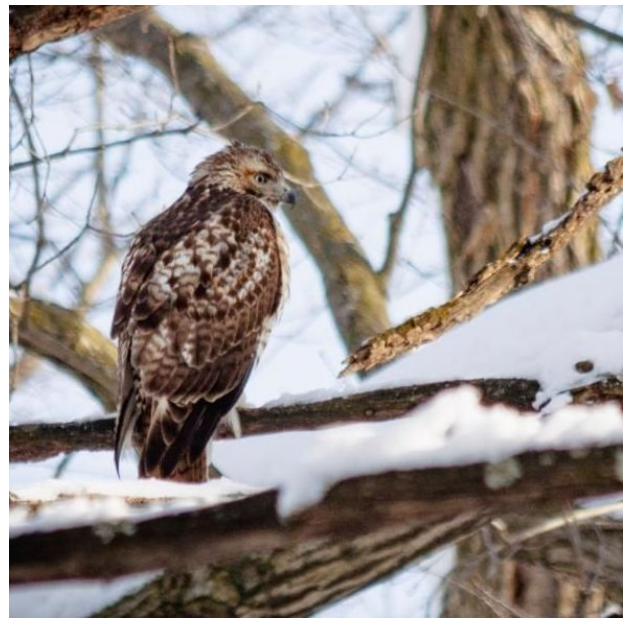
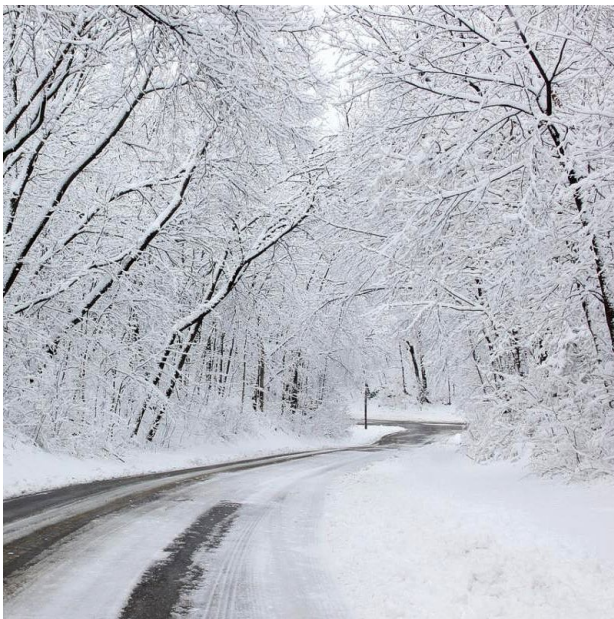
Here in the Midwest we must all be prepared to withstand extremes in weather, and so must our gardens. It is awe-inspiring to see the resilience nature possesses to survive and thrive in what often times feels like an inhospitable environment. That durability becomes apparent in winter when snow and ice build up on our beloved plants. While the weight of winter on your garden can be distressing when the boughs are bent and laden with ice, it is important to fight the inclination to remove the ice to straighten the plant. Doing so can cause irreparable damage to branches and foliage, creating wounds that allow pests to enter and diseases that interfere with the plant's natural growth.

Below are the landscape industry's best practices to avoid winter damage:

- For heavy snowfalls, you may gently brush off snow on shrubs and smaller trees as it builds up before it freezes. Using a broom, carefully push up to gently shake the snow off branches and foliage. Never pull downward as that puts additional pressure on the branch.
- Leave ice covered branches alone and wait for it to thaw. Attempting to remove ice from foliage and branches can cause breakage, disfiguring the plant.

While all damage can not be avoided, these steps will help minimize the detrimental affects that winter can have on your gardens. In early spring after winter has melted away, an assessment can be made and a plan of action formed to address any injury to plants.

As a reminder, wrapping tender trees and shrubs in fall helps to protect your landscape investment. Your Client Steward can provide a quote specific to your needs each autumn as a deterrent to winter damage.



Garden Steward Team

With regularly scheduled maintenance completed for the season, the Garden Steward team will be focused the following:

Winter pruning (as weather permits)

Snow services (as contracted)

Plant Health Care

CLOSED UNTIL SPRING

Contact Information

Feel free to contact your Garden Steward directly with any questions or requests for service. Or contact our office 847/549-1361, Monday-Friday, 8:30am-5:00pm.

NOTE: We continue to respect physical distancing protocols for staff and client safety until further notice.

Design Team

Joe Haubert: 847/514-8376 / joseph@rosboroughpartners.com

Chris Durley: 847/774-2006 / chris@rosboroughpartners.com

Taylor Lininger: 847/417-0834 / taylor@rosboroughpartners.com

Erika Plascencia: 847/343-7403 / erika@rosboroughpartners.com

Matt Johnson: 224/612-3319 / matt@rosboroughpartners.com

Garden Steward Team

Jose Mercado: 847/417-0841 / jose@rosboroughpartners.com

Terri Thornton: 847/514-8455 / terri@rosboroughpartners.com

Gabe Mercado: 847/417-4350 / gabe@rosboroughpartners.com

Bill Marty: 224/471-7904 / wmarty@rosboroughpartners.com

Plant Health Care

Lucio Torres: 847/417-1618 / lucio@rosboroughpartners.com

Chief Steward Officer

Phil Rosborough: 847/417-0832 / phil@rosboroughpartners.com

Rosborough Partners Inc | rosboroughpartners.com



Rosboroughpartners, Inc. | 342 N. 4th St., Suite 104, Libertyville, IL 60048

[Unsubscribe becky@rosboroughpartners.com](mailto:becky@rosboroughpartners.com)

[Update Profile](#) | [Constant Contact Data Notice](#)

Sent by becky@rosboroughpartners.com powered by



Try email marketing for free today!