



ROSBOROUGH
PARTNERS, INC.

SINCE 1991



Transforming Landscapes...Transforming Lives

CULTIVATE

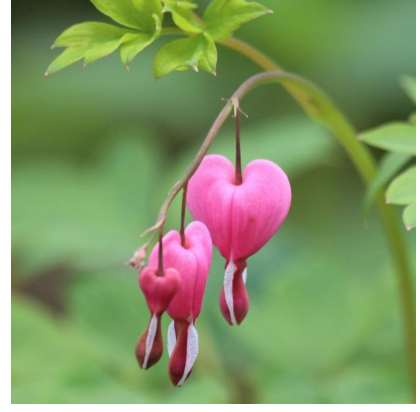
March 20, 2023

Hello Spring!



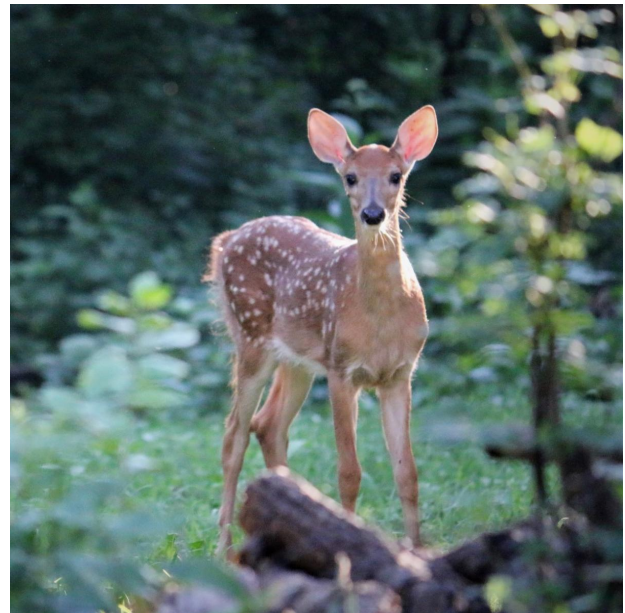
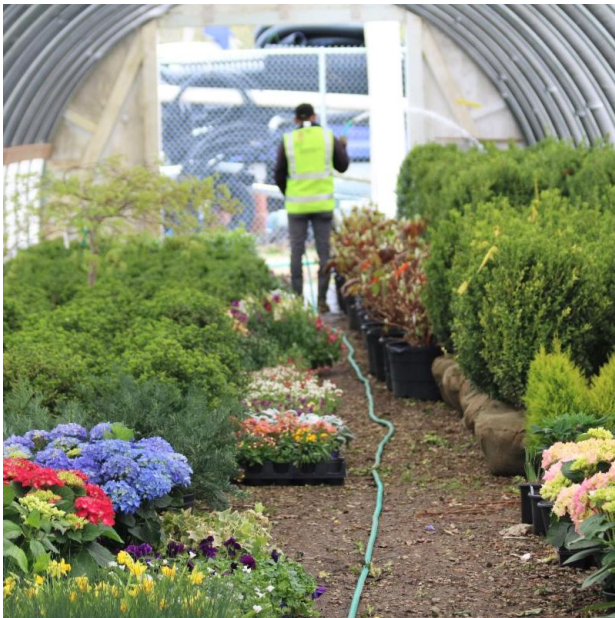
"Blossom by blossom the spring begins." — Algernon Charles Swinburne

Woohoo! It is finally the time we have been waiting for. We say goodbye to winter and embrace the spectacular delights spring offers us. Our hearts flutter as flowers bud and leaves unfurl, hinting at the glory to come.



Our staff is busy preparing spring clean up schedules and coordinating flower orders as we ready our team for the beginning of the season. In just a few weeks from now we roll out and begin our on site services for 2023.

If you have any issues left behind by winter, please contact your Garden Steward directly. We are looking forward to getting back to what we do best ... transforming your landscapes.



Garden Steward Team

Our team will be focused on the following services this week:

- Completing winter pruning**
- Preparing trucks & trailers for spring rollout**
- Purchasing plant material**

Plant Health Care

SERVICES RESUME IN APRIL

Contact Information

Feel free to contact your Garden Steward directly with any questions or requests for service. Or

contact our office 847/549-1361, Monday-Friday, 8:30am-5:00pm.

NOTE: We continue to respect physical distancing protocols for staff and client safety until further notice.

Design Team

Joe Haubert: 847/514-8376 / joseph@rosboroughpartners.com

Chris Durley: 847/774-2006 / chris@rosboroughpartners.com

Taylor Liningier: 847/417-0834 / taylor@rosboroughpartners.com

Erika Plascencia: 847/343-7403 / erika@rosboroughpartners.com

Matt Johnson: 224/612-3319 / matt@rosboroughpartners.com

Garden Steward Team

Jose Mercado: 847/417-0841 / jose@rosboroughpartners.com

Katie Belleno: 847/732-1927 / katie@rosboroughpartners.com

Terri Thornton: 847/514-8455 / terri@rosboroughpartners.com

Gabe Mercado: 847/417-4350 / gabe@rosboroughpartners.com

Plant Health Care

Lucio Torres: 847/417-1618 / lucio@rosboroughpartners.com

Chief Steward Officer

Phil Rosborough: 847/417-0832 / phil@rosboroughpartners.com

Rosborough Partners Inc | rosboroughpartners.com

