



Transforming Landscapes...Transforming Lives

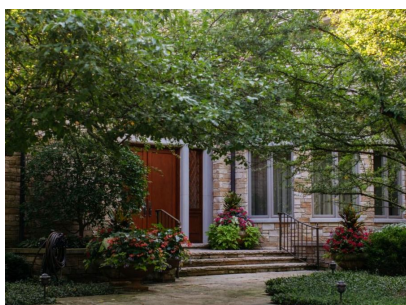
CULTIVATE

January 16, 2023

Rosborough Brings Home The SILVER!

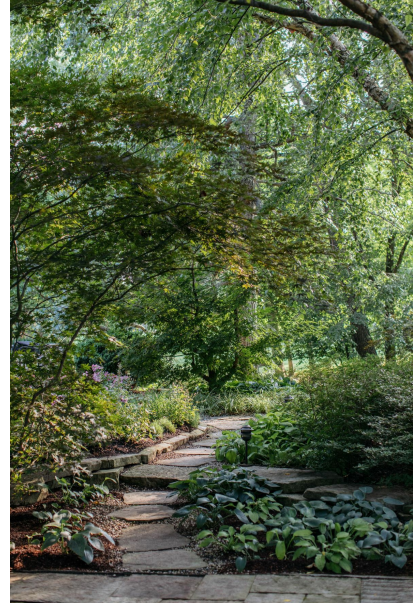
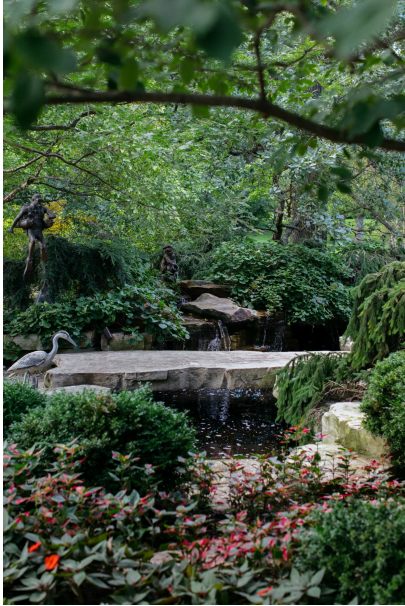


We are so excited to announce another wonderful recognition by the Illinois Landscape Contractor's Association (ILCA)! Rosborough Partners has won the **SILVER Award** for **Residential Landscape Maintenance** for our work stewarding this stunning landscape.

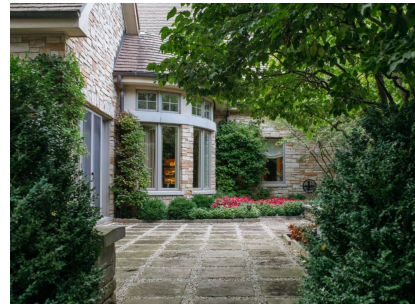
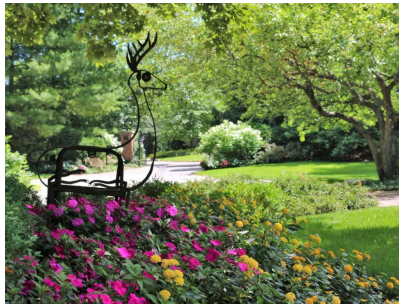


The enchanting wooded setting means we must be fastidious with

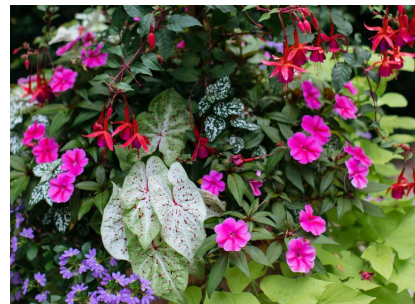
maintaining the landscape to preserve the allure of the forest without allowing it to take over. For example, we carefully hand weed the driveway to allow moss to grow between the bricks, enhancing the sense of passing time and permanence.



Maintaining the charming water feature and retaining views to the golf course are high priorities. Our team diligently removes organic debris to keep the spaces beautiful and the plants healthy. The variety of outdoor living areas benefit from continuous care to keep them ready for use for our client to enjoy their dreamy surroundings.



An abundance of annual flowers added to perennial beds keeps the entire property coordinated with amazing color. Proactive plant health care measures ensure old trees remain robust and continue to thrive. The client's unique garden art finds a home tucked into the bright blooms.



We are thrilled with this honor and look forward to providing garden stewardship excellence in the coming season.



Client Steward Team

This week our team will be performing the following service(s):

Dormant pruning
Snow services as needed

Plant Health Care

CLOSED UNTIL SPRING

Contact Information

Feel free to contact your Garden Steward directly with any questions or requests for service. Or contact our office 847/549-1361, Monday-Friday, 8:30am-5:00pm.

NOTE: We continue to respect physical distancing protocols for staff and client safety until further notice.

Design Team

Joe Haubert: 847/514-8376 / joseph@rosboroughpartners.com
Chris Durley: 847/774-2006 / chris@rosboroughpartners.com
Taylor Lininger: 847/417-0834 / taylor@rosboroughpartners.com
Erika Plascencia: 847/343-7403 / erika@rosboroughpartners.com
Matt Johnson: 224/612-3319 / matt@rosboroughpartners.com

Client Steward Team

Jose Mercado: 847/417-0841 / jose@rosboroughpartners.com
Katie Belleno: 847/732-1927 / katie@rosboroughpartners.com
Terri Thornton: 847/514-8455 / terri@rosboroughpartners.com
Gabe Mercado: 847/417-4350 / gabe@rosboroughpartners.com

Plant Health Care

Lucio Torres: 847/417-1618 / lucio@rosboroughpartners.com

Chief Steward Officer

Phil Rosborough: 847/417-0832 / phil@rosboroughpartners.com

Rosborough Partners Inc | rosboroughpartners.com



Share This Email



Share This Email



Share This Email

[Unsubscribe becky@rosboroughpartners.com](#)

[Update Profile](#) | [Constant Contact Data Notice](#)

Sent by becky@rosboroughpartners.com powered by



Try email marketing for free today!