

CULTIVATE

November 21, 2022

Thanksgiving Message



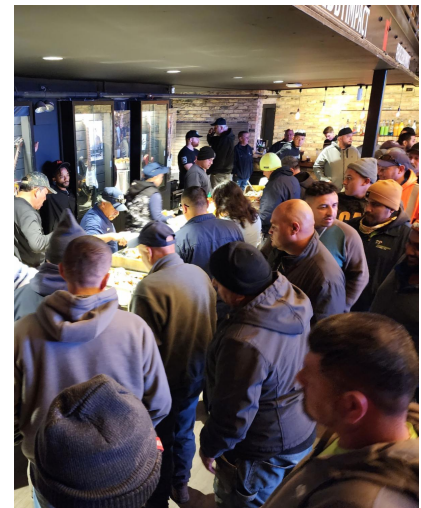
Happy Thanksgiving!

As our production season winds to a close, and as Thanksgiving is upon us, I wanted to add my own personal word of gratitude to you and your support of our teams this past season.

Last week we celebrated our teams with an end of the season event that we have done every November since 1991. This has always been my favorite RP event each year because it provides an opportunity to gather together, share a meal, and display each team's work for the entire company to witness and appreciate.

It is a joy to recognize the amazing effort our production teams exhibit throughout the season, and to pay tribute to each individual's contribution. For

many of the team members, it is the last time we will see them until spring returns, so it allows for a proper send off. So much of what we are able to do is because of their commitment, skills and dedication to all of you.



On behalf of the RP family, thank you...everything that we are able to do is because of your commitment to our teams, and the support you give to us year after year!

I pray that your Thanksgiving day is a bounty of food, family and friends that brings you joy!

Phil



Client Steward Team

This week our team will be providing the following seasonal service:

Holiday lighting and decor installation

Plant Health Care

CLOSED UNTIL SPRING.

Contact Information

Feel free to contact your Garden Steward directly with any questions or requests for service. Or contact our office 847/549-1361, Monday-Friday, 8:30am-5:00pm.

NOTE: We continue to respect physical distancing protocols for staff and client safety until further notice.

Design Team

Joe Haubert: 847/514-8376 / joseph@rosboroughpartners.com

Chris Durley: 847/774-2006 / chris@rosboroughpartners.com

Taylor Lininger: 847/417-0834 / taylor@rosboroughpartners.com

Erika Plascencia: 847/343-7403 / erika@rosboroughpartners.com

Matt Johnson: 224/612-3319 / matt@rosboroughpartners.com

Client Steward Team

Jose Mercado: 847/417-0841 / jose@rosboroughpartners.com

Katie Bellenzo: 847/732-1927 / katie@rosboroughpartners.com

Terri Thornton: 847/514-8455 / terri@rosboroughpartners.com

Gabe Mercado: 847/417-4350 / gabe@rosboroughpartners.com

Plant Health Care

Lucio Torres: 847/417-1618 / lucio@rosboroughpartners.com

Chief Steward Officer

Phil Rosborough: 847/417-0832 / phil@rosboroughpartners.com

Rosborough Partners Inc | rosboroughpartners.com



Rosboroughpartners, Inc. | 342 N. 4th St., Suite 104, Libertyville, IL 60048

[Unsubscribe](#) becky@rosboroughpartners.com

[Update Profile](#) | [Constant Contact Data Notice](#)

Sent by becky@rosboroughpartners.com powered by



Try email marketing for free today!