

CULTIVATE

February 21, 2022

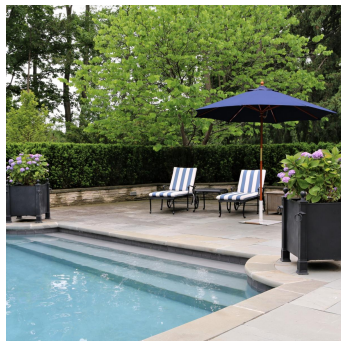
Presidents' Day Means Outdoor Fun Is Almost Here



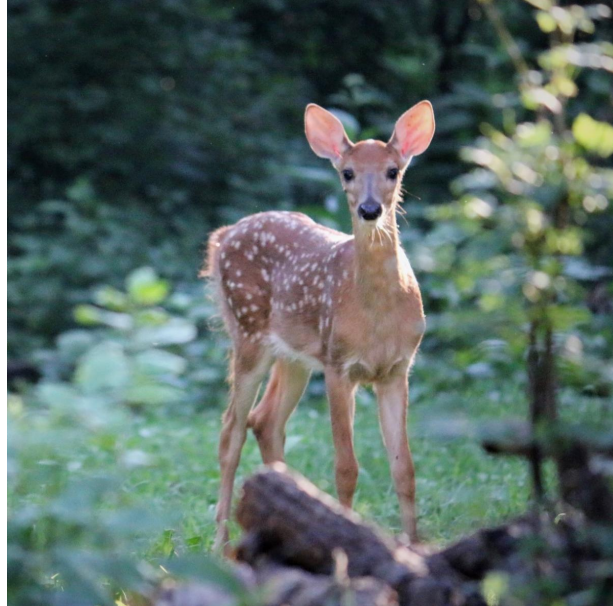
When we reach Presidents' Day on the calendar we know the bulk of winter is behind us and spring is within sight. That signals it is time to focus on your landscape and decide how best to provide your family with outdoor fun this season.

Whether your family enjoys a backyard barbecue, entertaining large parties

under the sun, or would benefit from a quiet space to relax when life gets hectic, planning your landscape transformation can be overwhelming. We can help. Building outdoor 'rooms' surrounded by lush gardens where you can bring your laptop, engage with friends, or enjoy an intimate evening fire ... whatever your outdoor pleasure, it is our passion to create it for you.



As spring draws near, now is the time to plan your ideal landscape project that will elevate your family's lifestyle in time to enjoy this summer. Our team of artistic, innovative professionals will transform your landscape ... and transform your life.



Garden Steward Team

Our team will be focused on the following services this week:

Winter pruning

Preparing trucks & trailers for spring rollout

Plant Health Care

CLOSED UNTIL SPRING

Contact Information

Feel free to contact your Garden Steward directly with any questions or requests for service. Or contact our office 847/549-1361, Monday-Friday, 8:30am-5:00pm.

NOTE: We continue to respect physical distancing protocols for staff and client safety until further notice.

Design Team

Joe Haubert: 847/514-8376 / joseph@rosboroughpartners.com

Chris Durley: 847/774-2006 / chris@rosboroughpartners.com

Taylor Lininger: 847/417-0834 / taylor@rosboroughpartners.com

Garden Steward Team

Jose Mercado: 847/417-0841 / jose@rosboroughpartners.com

Katie Bellenzo: 847/732-1927 / katie@rosboroughpartners.com

Terri Thornton: 847/514-8455 / terri@rosboroughpartners.com

Gabe Mercado: 847/417-4350 / gabe@rosboroughpartners.com

Plant Health Care

Lucio Torres: 847/417-1618 / lucio@rosboroughpartners.com

Chief Steward Officer

Phil Rosborough: 847/417-0832 / phil@rosboroughpartners.com

