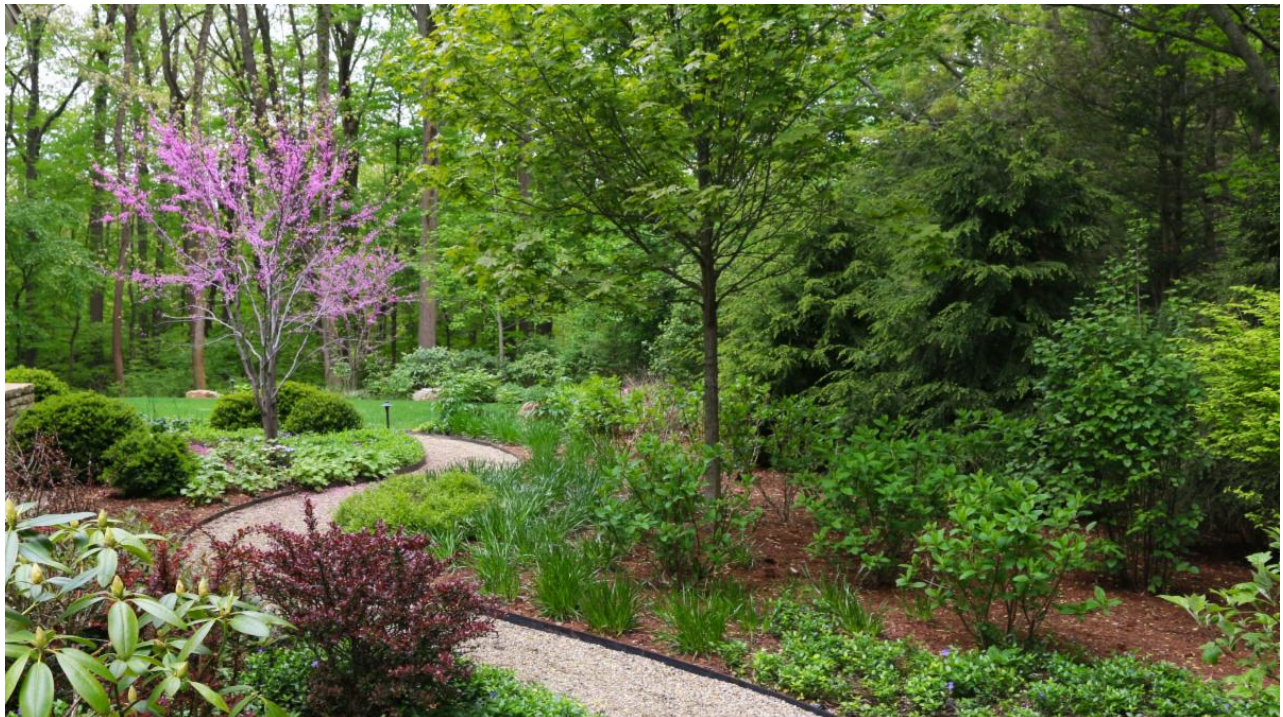


CULTIVATE

February 28, 2022

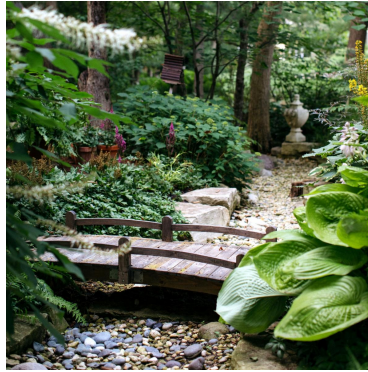
Proper Drainage Keeps Your Landscape Healthy And Attractive



The mercury is starting to inch higher as spring draws nearer, and we have already begun to experience the rain showers that arrive with the warmer temperatures, so drainage is soon to be a priority for many homeowners.

Proper grading and drainage are essential for a safe, healthy and beautiful property. Efficiently draining water away from the house protects the

foundation and basement from costly damage. Dangerous icy conditions can be mitigated by moving water away from driveways and walkways. Water that pools in the yard for too long can negatively impact plant viability and increase the chances for insect and disease problems.



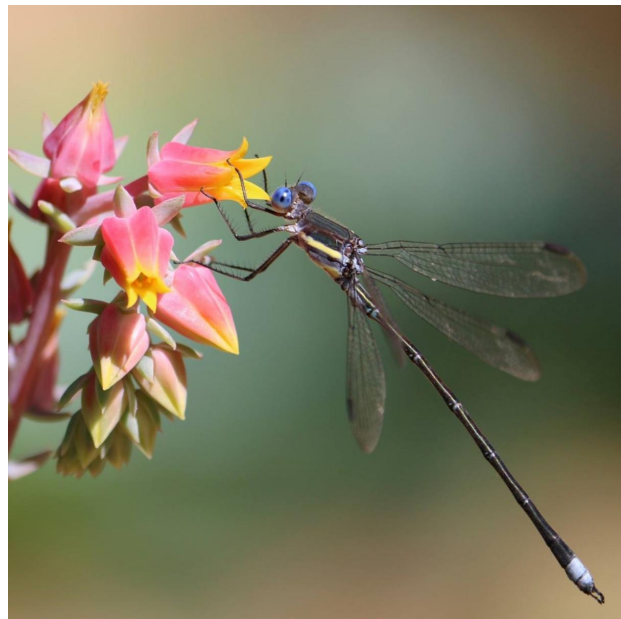
A well designed and implemented grading and drainage plan will address all these issues in a way that blends with the landscape. Our understanding of existing site conditions and local codes provides the basis for a creative design solution, including grading, underground drainage systems, rain harvesting, and rain gardens.

If you're experiencing signs of poor drainage such as pooling water, foundation seepage or soil erosion, our team of experts can design and install an effective, attractive draining solution that will protect your investment.



Garden Steward Team

Our team will be focused on the following services this week:



Plant Health Care

CLOSED UNTIL SPRING

Contact Information

Feel free to contact your Garden Steward directly with any questions or requests for service. Or contact our office 847/549-1361, Monday-Friday, 8:30am-5:00pm.

NOTE: We continue to respect physical distancing protocols for staff and client safety until further notice.

Design Team

Joe Haubert: 847/514-8376 / joseph@rosboroughpartners.com

Chris Durley: 847/774-2006 / chris@rosboroughpartners.com

Taylor Lininger: 847/417-0834 / taylor@rosboroughpartners.com

Garden Steward Team

Jose Mercado: 847/417-0841 / jose@rosboroughpartners.com

Katie Bellen: 847/732-1927 / katie@rosboroughpartners.com

Terri Thornton: 847/514-8455 / terri@rosboroughpartners.com

Gabe Mercado: 847/417-4350 / gabe@rosboroughpartners.com

Plant Health Care

Lucio Torres: 847/417-1618 / lucio@rosboroughpartners.com

Chief Steward Officer

Phil Rosborough: 847/417-0832 / phil@rosboroughpartners.com